

Please note: this catalog is only for viewing and printing purposes. We are linking our hardcopy catalog here because some folks enjoy looking through our products in a catalog-type format versus searching through a web format.

If you would like to order products from our online web store, please visit the product pages linked under the headings at the top of the webpage (e.g., headings titled Original Lures, Accessories, etc.). Prices will be listed specific to each product in the web store, and items can be added to a cart for checkout.

Thank you for visiting!

Mandy

Al's Goldfish Lure Co.

# als

GOLDFISH LURE CO



**PROVEN VERSATILITY**

ESTABLISHED 1952



MADE IN AMERICA

# Classics

## About the Goldfish

Since 1952, the lure known as the "Al's Goldfish" has been catching everything from trout to striped bass, proving its versatility for over 67 years. Fishing with the Goldfish is easy, as its natural action resembles a fleeing minnow as it moves through the water. When casting, allow the lure to drop to desired depth (1 second of time is roughly 1 foot). Retrieve at a slow, steady pace; periodically add a twitch or a pause to mimic a dying minnow. Direct tie or add a split ring or clip when casting or slow trolling as a swivel will reduce the wobble action for which the Goldfish is famous.



Neon Blue



Pink Black



Gold Red



Red White



Gold Orange



Chartreuse



Chartreuse/Lime



Chartreuse/Orange



White/Pink



Nickel  
1/2 oz. - Actual Size



Gold  
1/4 oz. - Actual Size



Copper  
3/16 oz. - Actual Size

G100 3/16 oz. | 1 1/2" | #7 Hook  
G200 1/4 oz. | 2" | #6 Hook  
G300 1/2 oz. | 2 3/4" | #2 Hook

## Limited Edition Premium Goldfish



Smelt



Chub



Green Perch



Rainbow Smelt



Brazil



Spotted Flame

*"I started fishing the golden version of Al's Goldfish in 1968 for trout in Missouri. I have consistently caught trout, bass, bluegill and crappie on this amazing lure. I will never own a tackle box without several Al's Goldfish of various sizes and colors."*

Kenneth L. Kieser, Veteran outdoor writer of 43 years; National Freshwater Fishing Hall of Fame inductee, 2010

Cover design by Eddy Stahowiak

# Northern Edition

**als**  
GOLDFISH LURE CO.

## About the Northern Edition

The Northern Edition is the same great lure, it's just BIGGER. The Northern Edition Goldfish is 2-3/4" long, comes in three weights (1/2 oz, 3/4 oz, and 1-1/4 oz), and a variety of colors. Choose between a 1/0 treble hook or a 3/0 single hook with hackle feather.

The Goldfish proves its versatility as Pike, Muskie, Walleye, Trout, Salmon and Bass can't resist its distinctive action.

SHOWN IN  
ACTUAL SIZE



  
Made In  
the U.S.A.



**G300 1/2 OZ.**



**G400 3/4 OZ.**



**G500 1-1/4 OZ.**



**ALL COLORS  
AVAILABLE WITH  
SINGLE OR TREBLE  
HOOK OPTION**

# Ice Jigs

## Goldfish Ice Jig

The Original Goldfish configured for ice fishing makes a great jig with lots of flutter. Comes with a red tab that can be added if desired.

G100 3/16 oz. | 1 1/2" | #8 Hook



## Lil' 49er Ice Jig

This year we are introducing the Al's Goldfish "Lil' 49er" to hardwater anglers, configured for vertical jigging with a hook off the nose. It's a brass spoon with a funky shape and distinct jigging action. Anglers watching the lure's action with sonar will see the lure zig-zag erratically in and out of the transducer beam as the lure drops. The Lil' 49er is set to catch trout, bass, walleye, crappie and other panfish.



# Ice Jigs



## GLOW JIGS

Get jiggy with GLOW! These Goldfish, Lil' 49ers and Helgies glow in the dark - simply charge with sunshine or blacklight, and light up the depths!

### Goldfish Glow Jigs



White/Pink Glow



Chartreuse Glow



Chartreuse/Orange Glow



Chartreuse/Lime Glow

### Lil' 49er Glow Jigs



White/Pink Glow



Chartreuse Glow



Chartreuse/Orange Glow



Chartreuse/Lime Glow

### Helgy Glow Jigs



White/Pink Glow



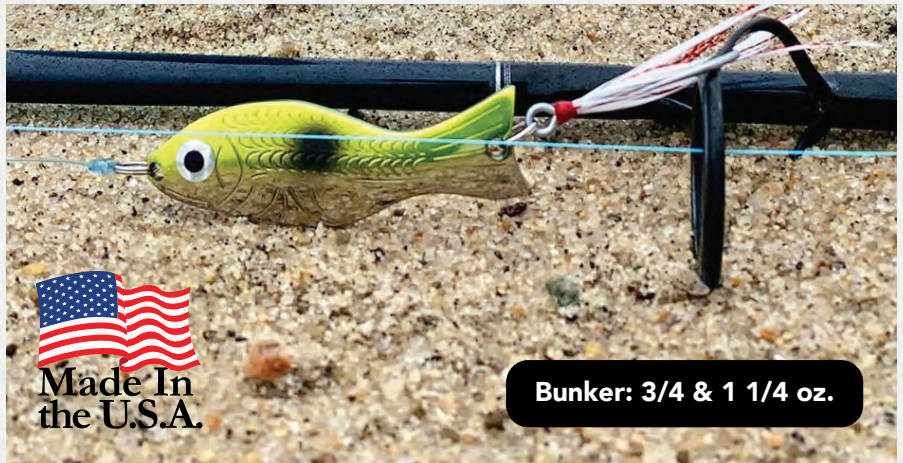
Chartreuse/Orange Glow



Chartreuse/Lime Glow



# Saltwater Series



  
Made In  
the U.S.A.

**Bunker: 3/4 & 1 1/4 oz.**



**Nickel**  
1/2 & 3/4 oz.



**Gold**  
1/2 & 3/4 oz.



**Neon Blue**  
1/2, 3/4 & 1 1/4 oz.



**Copper**  
1/2 & 3/4 oz.



**Chartreuse/Orange**  
1/2 oz.



**White/Pink**  
1/2 oz.



**Chartreuse**  
1/2 oz.



**Chartreuse/Lime**  
1/2 oz.



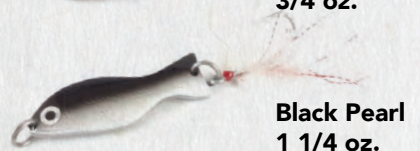
**Gold Orange**  
3/4 oz.



**Neon Green**  
3/4 oz.



**Chartreuse Pearl**  
1 1/4 oz.



**Black Pearl**  
1 1/4 oz.



**Limited Edition  
Fish Wrap**  
1 1/4 oz.

- Custom tied 3/0 hooks
- Available in 3 weights

- Marine grade brass
- Hard baked enamels

# Saltwater Series



## Do you jig for bottom fish?

The Goldfish can be jigged for bottom-feeding species with or without bait – just drop your line and jig!

*Jig it*



*New Product*

## Introducing the Wicked Wec High-Low Rig

Mike Wec of Rhode Island developed the "Wicked Wec High-Low Rig" to get his Goldfish to wicked depths and keep them in place where the current runs fast. The famous flutter of the Goldfish imitates bait fish drifting along with the current where bottom-feeders like to hunt.

Use this rig to jig for bottom-feeding species such as fluke, black sea bass, tautog, scup, cod, haddock, and halibut. Watch videos of the Wicked Wec High-Low Rig on YouTube and see how it works and what it catches!



Overall Length - 23"  
50lb Mono  
Two Al's Goldfish with 3/0 Single Hooks



*"I have used high-low rigs for years, but had not seen a rig with metal flashers. A major key to my success was realizing how well it worked to jig a single Goldfish, so I decided to try them as flashers on a high-low rig. I started out-catching a traditional rig five to one!"*

Mike Wec

Add weight to reach desired depth





# Al's 49er & Lil' 49er

*Now Available in 2 Sizes*

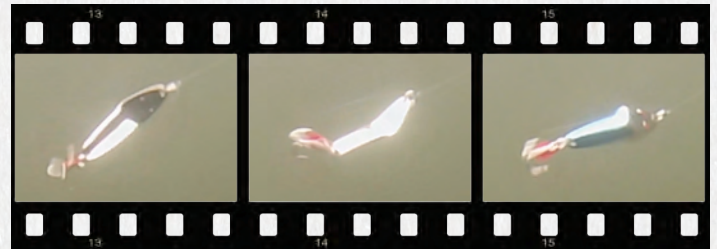
## Forty Niner



## Cast it, troll it, jig it

This lure has become so popular with anglers for its distinctive shape and erratic action, we are now producing it in a smaller version! The Forty-Niner has long been valued as a trolling and casting lure, and is an effective jig in both open and hard water. Both sizes get the attention of bass, trout and salmon, but you can use the larger Forty-Niner to target bigger species like walleye and northern pike, or get all that same flash and wobble with the Lil' 49er and target smaller species like crappie and other panfish.

FN50 1/4 oz. | 1 3/4" | #7 Hook  
 FN100 5/16 oz. | 2 1/4" | #6 Hook



The wobble of the 49er... direct tie on for 3/4 turn wobble.



## Lil' 49er



# Al's Helgy & Water Witch



Black



## Al's Helgy

The Al's Helgy is a lightweight spoon made to imitate the shape of the Hellgrammite, or Dobsonfly larvae. These formidable insects live in streams throughout the USA and are favorite food of the predators within.

When retrieved it bounces, wobbles and spins imitating many larval insects, hellgrammite and leaches.

H100 1/4 oz. | 1 3/4" | #7 Hook

*Great for casting and trolling*



Black



White



Chartreuse



Copper



Nickel



Genuine Gold



Orange

## Al's Water Witch

This lure comes with nickel or gold plating, and has a different flutter than other spoons. It is effective and easy to use.

P175 1/4 oz | 2" | #7 Hook



Nickel



Gold



# Accessories

## The ONLY American-Made Hook Bonnets

Still proudly MADE IN THE USA, hook bonnets are a must have accessory for every tackle box. Protect your kids, skin, clothes and upholstery. Get rid of tackle box tangles. Various pack sizes available. Check website or price list for current details.



### Standard Hook Size Chart

Small Blue 12-8 | Medium Green 8-2 | Large Red 2-2/0

## Precision Oiler

Allows you to easily place a drop of light weight machine oil exactly where you want it. Great for boats, reels, hinges and more.

*A must have on any boat*



## Minnow Rig

### Stainless Steel Wire

The Minnow Rig is a leader through dead or live minnow. Perfect for all gamefish. The detachable double hook with a strong swivel is used with minnows, worms, hellgramites, grasshoppers and frogs. (3 Pack)



AVAILABLE IN LENGTHS

MR 1 1/2" | 2" | 2 1/2" | 3"

## Baiting Needles

A nifty accessory for threading our Minnow Rig. Simple, easy to use and low priced. You will also find many uses for these handy needles around your home or shop. (4 pack)

AVAILABLE IN LENGTHS

ABN 2 1/2" | 4" | 5"



# Accessories



## Fly Line Eyelets

Eliminates knots in flyline where leader is tied  
 No splash when line hits water  
 Soft, smooth, easier casting  
 Line does not catch when pulled through guides  
 Now in more economical 15 packs



## Kwik Klips

Change flies in seconds  
 Floats with dry fly  
 Natural free action  
 Fly will not whip off  
 6 klips per pack  
 Only one knot to tie  
 Designed for strength



- A SMALL
- B MEDIUM
- C LARGE
- D XLARGE

## Al's Good Fortune Keyring

For centuries, goldfish have been considered symbols of good fortune. It is believed that a goldfish or its likeness in a home allows good fortune to enter and stay. What is better than allowing good fortune to stay right in your pocket? Use as is or attach it to an existing keyring. Give a genuine gold plated Al's Goldfish Good Fortune Keyring to each member of your family and friends to create "A Circle of Good Fortune."

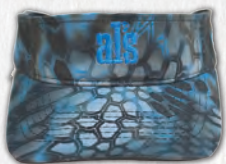


## Fishing Clippers

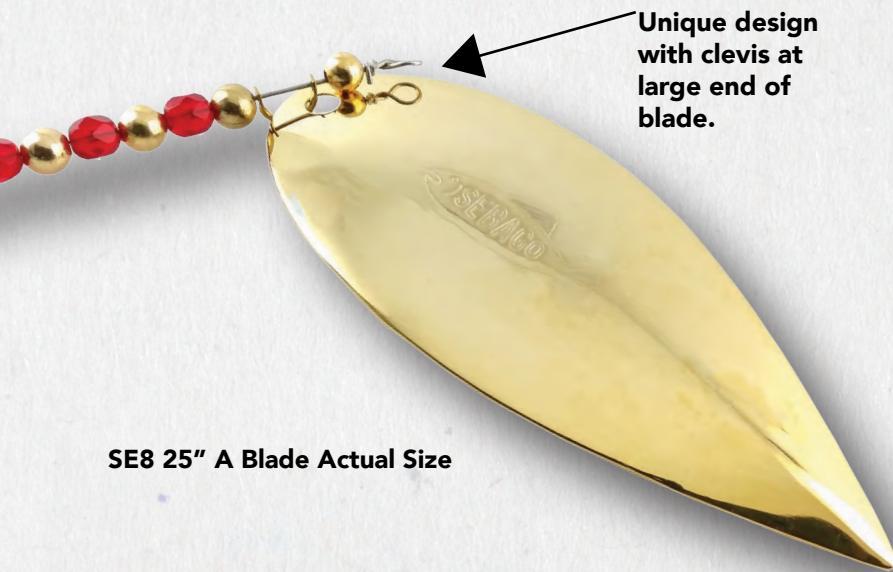
These clippers have a sharp flat clipping edge for your line, small knife blade and de-tangler. Handy accessory for fishing or everyday life.

## Al's Apparel

Check our website for current stock of hats, shirts and other apparel.



# Sebago Trolling Rigs



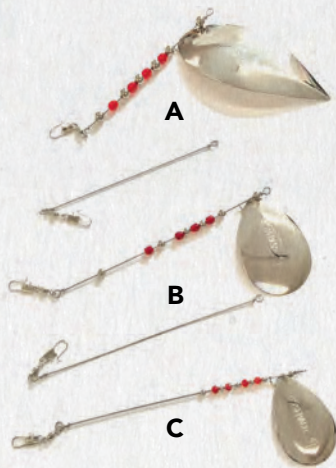
Unique design with clevis at large end of blade.

Named after Maine's deepest lake, the 25" Sebago rig includes the uniquely shaped large A blade. With the clevis at the curve, it creates immense vibration and flash.

Made with stainless steel wires, red glass, brass or nickel plated beads and gold or nickel plated brass A, B & C blades.

The full rig is 5 individual links connected with barrel swivels to stop line spin. It also allows you to change configuration for fishing depth.

SE8 25" A Blade Actual Size



**Starvation Chain:** A & B blades with the bare link between removed to run deep. Troll speed 1.8 knots.

**Strawberry Shallow Runner:** Large A - blade, 18" leader & crawler tipped with power bait. 25-30' depth.

**Yellowstone Limiter:** Like the Strawberry rig, large A-blade, 24" leader & Al's Helgy instead of crawler.



The SE10 is a 11" lake troll with 2 independent sections connected with snap swivels. Made with stainless steel wires, red glass, brass or nickel plated beads and 22K gold or nickel plated brass C & D blades.



SE10 11" C Blade Actual Size

